

California Environmental Engineering

ENVIRONMENTAL TESTING LABORATORY
1061 N. GROVE ST. ANAHEIM, CA 92806
(714) 630-8555 FAX (714) 630.8014

6/1/89

REC'D BY _____ I
DATE 6-7-89

Mr. Tom Stolnoch
Hudson Aviation Service's
7025 W. Imperial Highway
Los Angeles, Ca. 90045

Re: Opacity test results on Omstar D1280X fuel additive
LAX/D.O.A. shuttle buses.

Dear Mr. Stolnoch,

The testing of Omstar D1280X fuel additive in LAX/D.O.A.
shuttle buses operated and maintained by Hudson General
Corporation have again shown positive results.

All tests were run in accordance with the New Jersey State
Department of Environmental Protection Smoke Opacity testing
procedure 7:27B-4.4. Mr. Robert McCray of your department
conducted all tests.

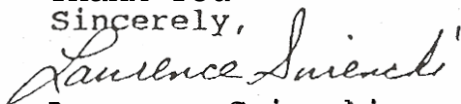
Enclosed please find a printout of the thirty buses tested
with corrected Opacity readings and percentages carried out
to the nearest one hundredth of a percent. These corrections
were done by computer after entering the raw opacity
readings. The bottom line far right figure is the combined
average opacity percent reduction of the list-d vehicles.
This reduction is a 53.24% combined average overall.

We also checked the results of the Summary of Forecasted
results of testing all buses in the fleet (page one of seven)
that you supplied to us for review. After review of the data
and recalculation of pages two thru six using the statistical
formulas on page seven we feel that the forecasted results
are true and **correct** at the **confidence** levels stated.

All the data was recalculated by Mr. Greg Long, Staff
Engineer and reviewed by Mr. Lawrence Swiencki, Laboratory
Manager of California Environmental Engineering. **California**
Environmental Engineering (C.E.E.) is an EPA recognized and
ARB **certified/licensed** emission testing facility.

We feel that the Omstar D1280X product is a positive force in
reducing the levels of hazardous pollutants emitted by diese
fueled vehicle's. If you have any questions please feel free
to call me at 714-630-8555.

Thank You
Sincerely,



Lawrence Swiencki
Laboratory Manager C.E.E.

OPACITY AND EMISSIONS
SUMMARY
AVERAGE PERCENT REDUCTIONS

FAST AND SLOW IDLE OPACITY TESTING
FTP EMISSION DATA TESTING

Tests of

OMSTAR DIESEL FUEL CONDITIONER D-1280X

Prepared By

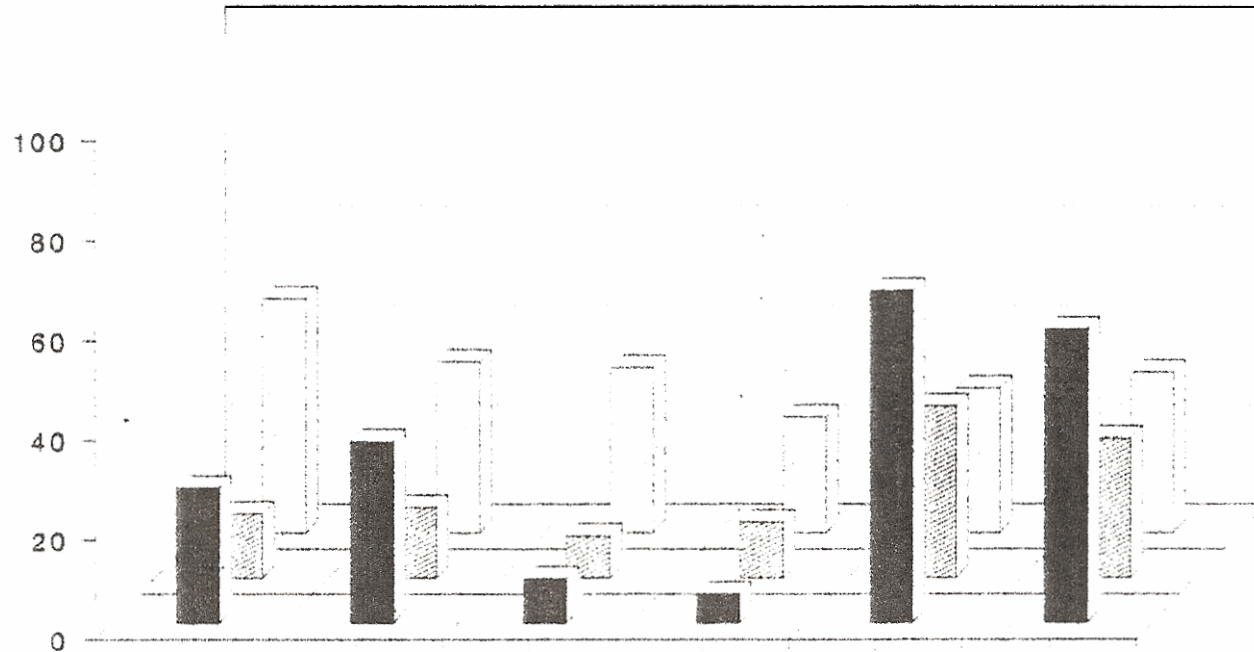
California Environmental Engineering
Anaheim, CA

DATA BY: C.A.R.B., C.E.E., OLSON ENGINEERING
DATA SUMMARY AND COMMENTS BY: LARRY SWIENCKI
DATA PRESENTATION AND COMPILING BY: GREGORY LONG

August 1989

HUDSON/AVIS SUMMARY OF OPACITY TESTING FAST AND SLOW IDLE OPACITY TESTS

% OPACITY OR % REDUCTION



	FAST B/L	SLOW B/L	FAST FINAL	SLOW FINAL	FAST RED.	SLOW RED.
3. AVIS	47	34.45	33.3	23.3	29.16	32.37
2. HUDSON/ UCLA	12.01	14.1	8.46	11.18	34.5	28.09
1. HUDSON/LAX	27.1	38.83	9	5.8	66.8	59

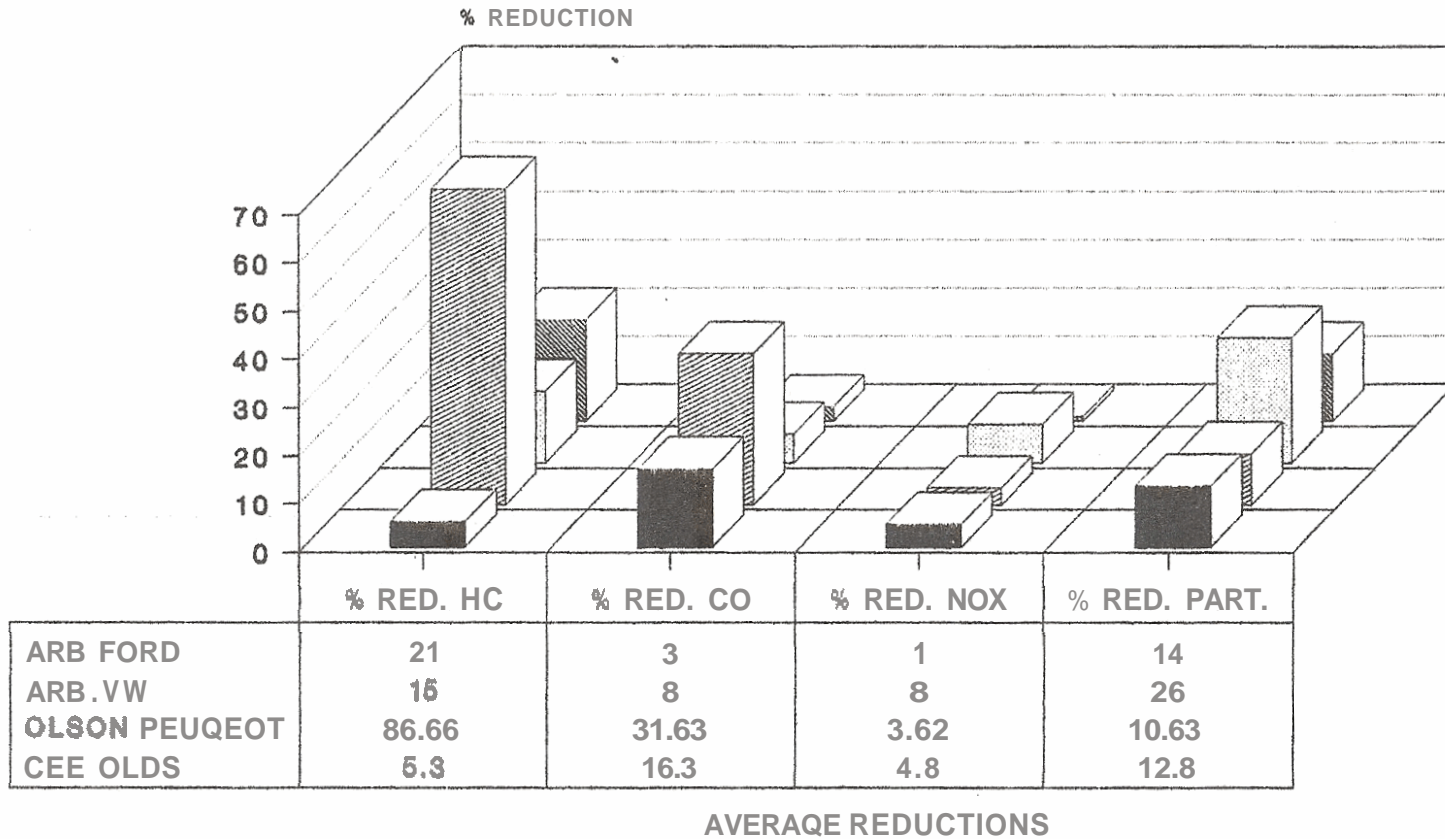
1. HUDSON/LAX
 2. HUDSON/ UCLA
 3. AVIS

1. HUDSON L.A.X. 2m HUDSON U.C.L.A.
3. AVIS

B/L • BASELINE, RED. • REDUCTION

EMISSION REDUCTION SUMMARY

FTP TYPE TESTING DATA

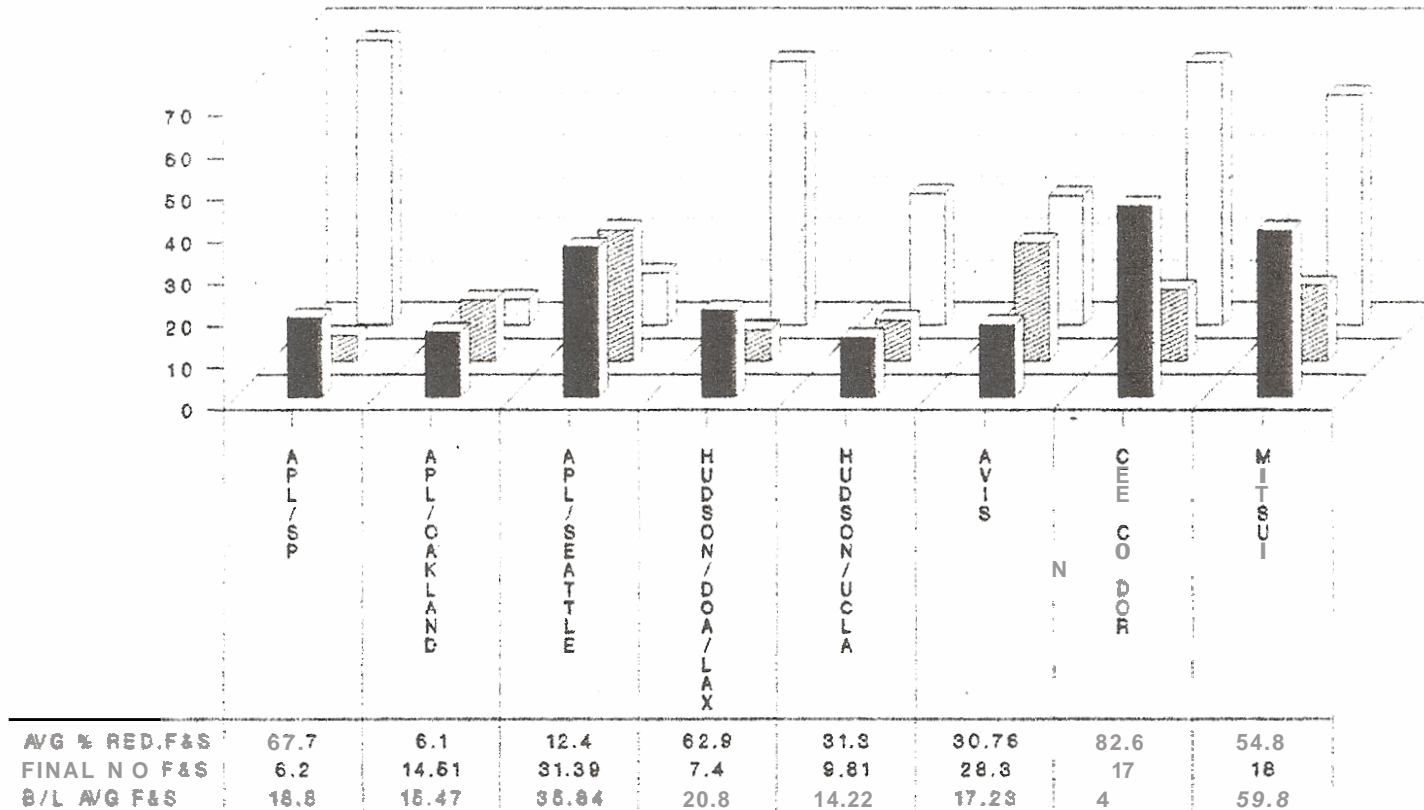


CEE OLDS
 OLSON PEUGEOT
 ARB VW
 ARB FORD

C.E.E.: CALIFORNIA ENVIRONMENTAL ENG.
 OLSON: OLSON ENGINEERING
 A.R.B.: CALIFORNIA AIR RESOURCES BOARD

OPACITY SUMMARY

AVERAGE CUMULATIVE REDUCTION DATA

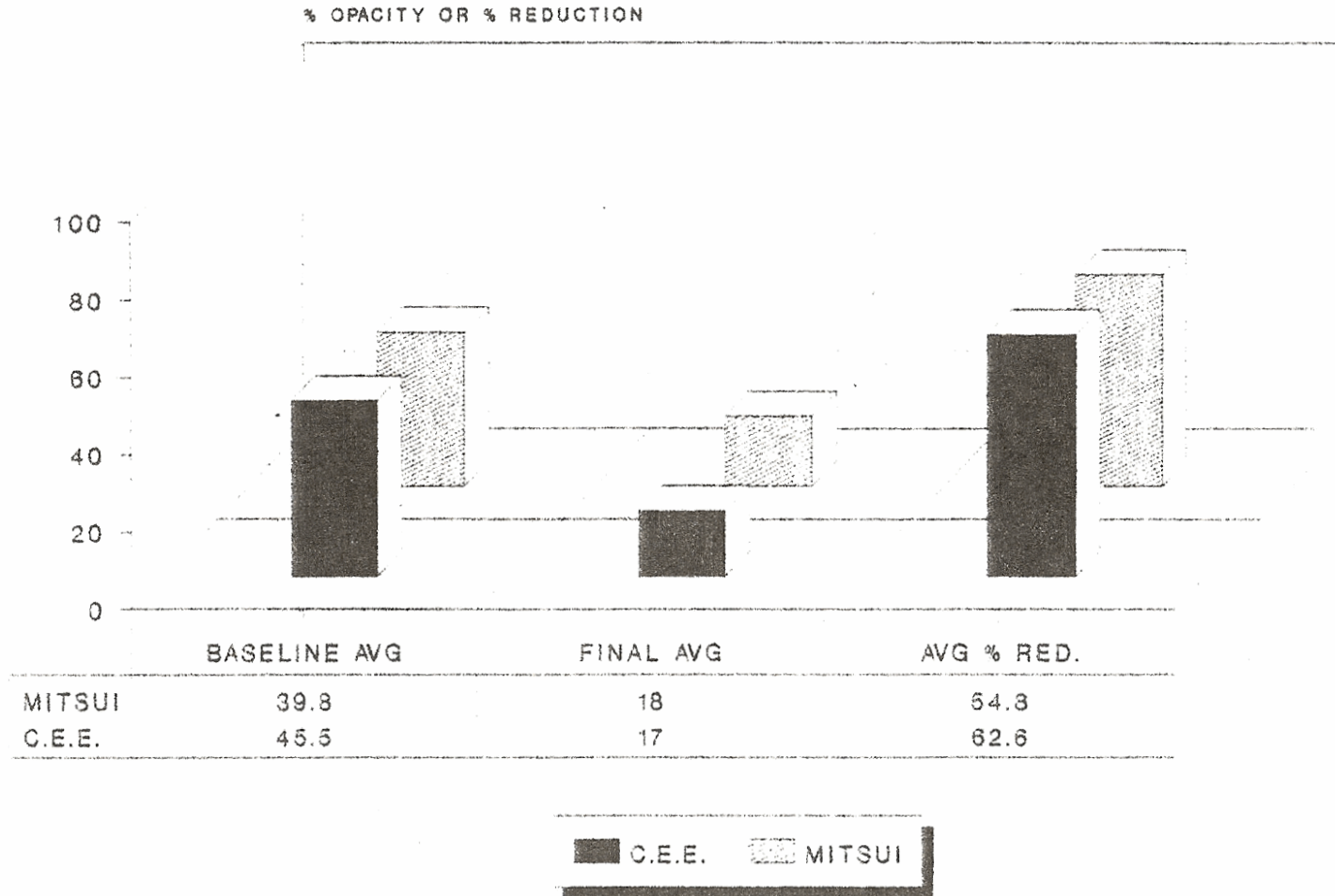


B/L AVG F&S
 FINAL AVG F&S
 AVG % RED.F&S

APL, HUDSON GENERAL. AVIS, C.E.E. OLSON

F&S=FAST AND SLOW IDLE, RED.. REDUCTION

C.E.E./MITSUI SUMMARY OF OPACITY TESTING OPACITY TESTS

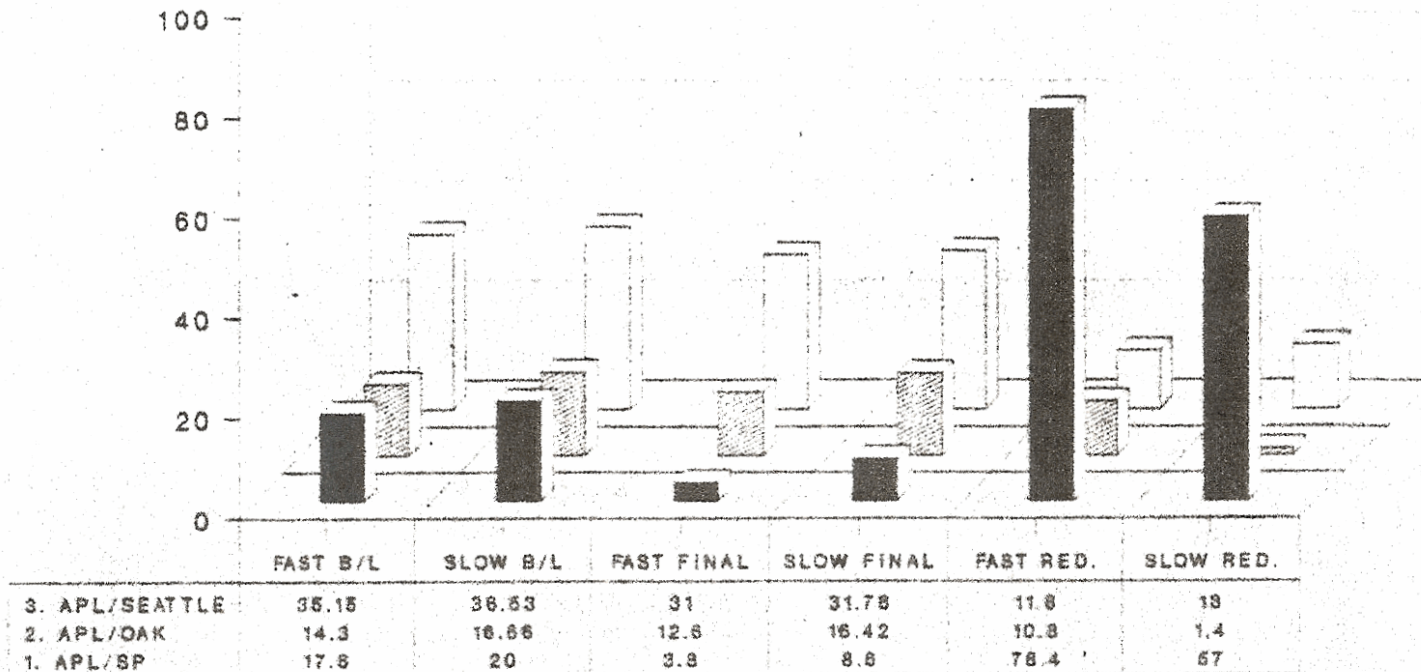


C.E.E. • CALIFORNIA ENVIRONMENTAL ENG.
MITSUI • MITSUI

B/L • BASELINE, RED. • REDUCTION

E L SUMMARY OF OPACITY TESTING FAST AND SLOW IDLE OPACITY TESTS

% OPACITY OR % REDUCTION



1. APL/SP 2. APL/OAK 3. APL/SEATTLE

1. APL/SAN PEDRO 2. APL/OAKLAND
3. APL/SEATTLE

B/L • BASELINE, RED. • REDUCTION